

ICCI 2026

The 3rd International Conference on Computational Intelligence 2026

Birla Institute of Technology, Mesra, Ranchi, Jharkhand, India.

10-12
September, 2026

09:30 AM – 05:30 PM
(GMT+5:30)

About BIT, Mesra

Birla Institute of Technology (BIT), Mesra, Established in 1955, is a Premier Technical Institute in India Known for Academic Excellence and Innovation. The Department of Computer Science and Engineering (CSE) is a Center of Advanced Learning, offering Undergraduate, Postgraduate, and Doctoral Programs in Artificial Intelligence, Machine Learning, Data Science, Cybersecurity, and High-Performance Computing.

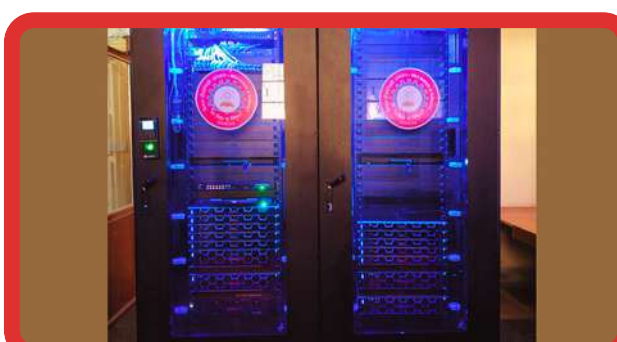
Theme

Machine Learning for Geospatial Analytics

Conference will focus on the application of Machine Learning techniques integrated with Geographic Information Systems (GIS), Spatial Data Analysis, Remote Sensing, Environmental Monitoring, and Urban Planning.

About the Conference

The 3rd International Conference on Computational Intelligence (ICCI 2026): Machine Learning for Geospatial Analytics is set to be organized by the Department of Computer Science and Engineering, Birla Institute of Technology, Mesra, Ranchi, supported by the Department of Science and Technology (DST) under the Promotion of University Research and Scientific Excellence (PURSE) scheme.



Call for Papers

The International Conference on Machine Learning for Geospatial Analytics (ICCI 2026) invites the submission of original research articles, visionary concepts, and practical case studies from academia, industry, and research and development organizations. The conference serves as a multidisciplinary forum for the exchange of ideas and the discussion of recent innovations, emerging challenges, and future directions in advanced computing systems, intelligent technologies, and engineering applications that are shaping the digital era.

Registration Fee

Other Country Author : \$275 /Per
Indian Author : ₹ 8,000 /Per
Listener : ₹ 2,500 /Per

Eminent Speakers



Prof. Kalyanmoy Deb
Michigan State University, USA

Prof. Sanghamitra Bandyopadhyay
ISI Kolkata



Prof. Ujjwal Moulik
Jadavpur University

Prof. Rajkumar Buyya
The University of Melbourne



About Conference

Scan for More
Details About
Conference

<https://icci.bitmesra.ac.in>



Tracks (Not Limited to)

- Soft Computing for Geospatial Applications
- Swarm and Evolutionary Computing for Geospatial Applications
- Image Processing and Cognition System for Geospatial Application.
- Data Mining for Geospatial Applications
- Intelligent System Design and Modelling for Geospatial Applications
- Interdisciplinary Applications

Important Dates



Call for Papers
25th January, 2026



Submission Closing Date
30th April, 2026



Paper Acceptance Intimation
15th July, 2026.



Camera Ready Paper Submission
10th August, 2026



Registration Start Date
25th August, 2026

Patron

Prof. Indranil Manna
Vice Chancellor, BIT Mesra

Program Chair

Prof. Abhijit Mustafi
HOD, Dept. of CSE, BIT Mesra

Conveners

- Dr. Sudip Kumar Sahana
- Dr. Debjani Mustafi

Co-Conveners

- Prof. Sandip Dutta
- Dr. Shamama Anwar

Advisory Chairs

- Prof. Kalyanmoy Deb
- Prof. Ying Tan

- Prof. Rajkumar Buyya
- Prof. Sudeshna Sarkar

- Prof. Ujjwal Moulik
- Prof. Supratim Biswas

- Prof. Sanghamitra Bandyopadhyay